

How to well use the ip camera with built-in TF Card

Attentions: if camera with built-in SD card, you can fulfill more functions, follow us to set up the functions:

Function A: video push

Function B: remotely playback TF card records via the app

Function C: download motion detection pictures and videos.

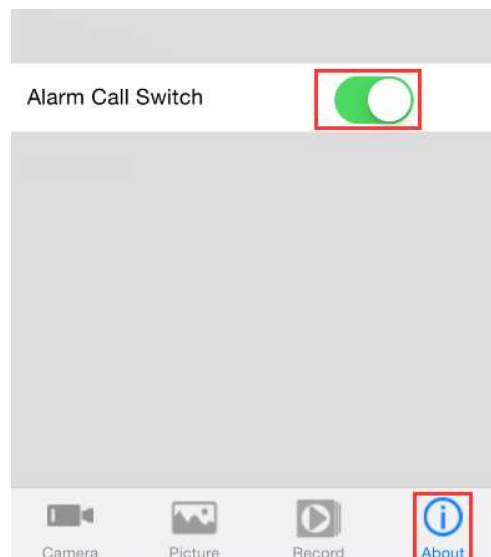
Function A: Video push

① Click add camera, Scan the or search the QR code on camera body via the free 3 Apps

Tips: P2PWIFICAM / icam8 / SMART DB CAM



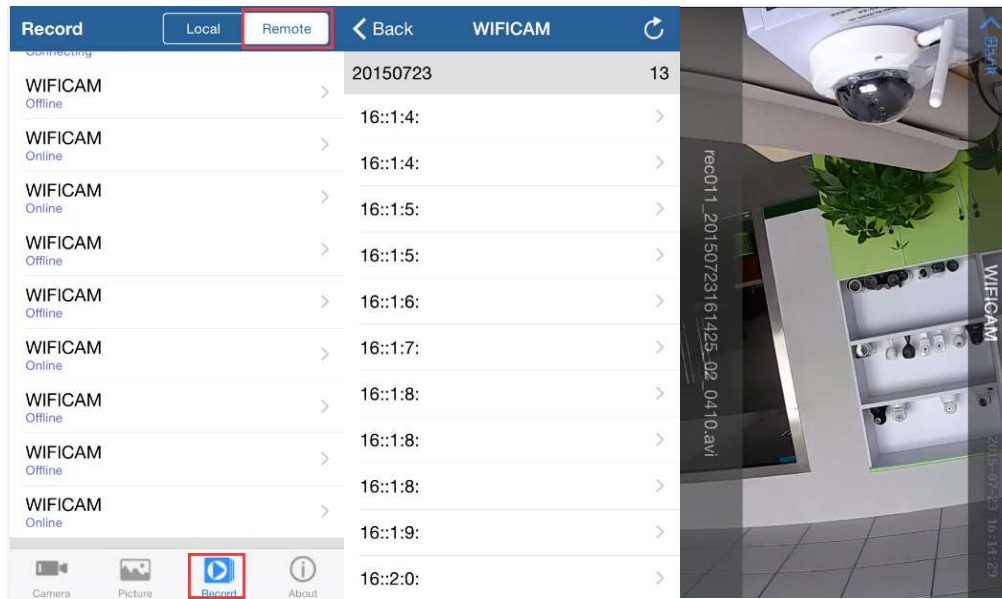
② run the App and click the About, open the Alarm Call Switch function,, the motion detection will start.



Tips: The Camera motion dection should be enable on the IE interface.

Function B: remotely playback TF card records via the app

Click the Record, and then choose the Remote interface, choose your camera and the video with time, you can playback it anywhere via the internet.



Function C: download motion detection pictures and videos

- 1 Run the Search tool from the CD



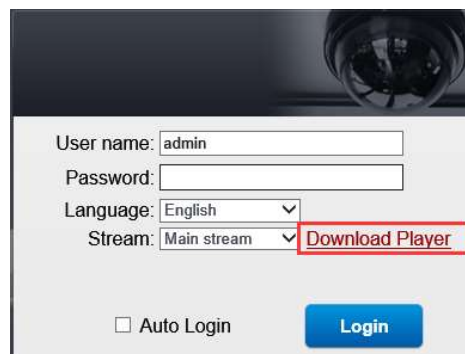
- 2 Choose the IP address to double click to open it on IE

IPCSearch Ver1.7

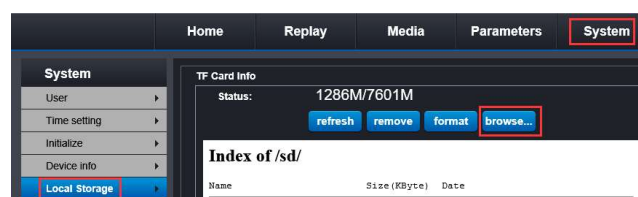
Language: English Mode: Broadcast

No.	IP	DevID	Name
1	192.168.1.111	VVVFPC1501263880HSD5-XHo0fBoInLK	IPCAM 255
2	192.168.1.103	VVVFPC1501263880HSD5-e3a40c56RBb	IPCAM 255
3	192.168.1.138	VVVFPC1504173580HSD5-9dxo4BdTiPH	IPCAM 255

- 3 Type the default password, click login to view



- 4 Click System, choose the local storage, and click the browser, you will see the pictures and record video

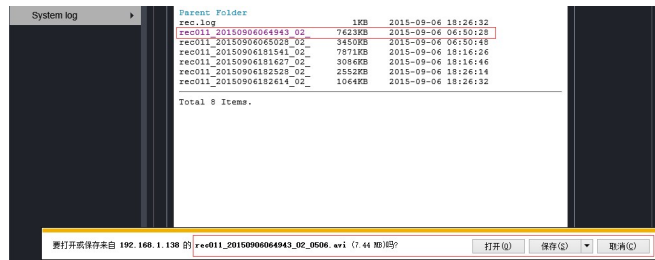


Index of /sd/

Name	Size (KByte)	Date
20150821		2015-08-21 16:20:02
20150822		2015-08-22 12:22:32
20150823		2015-08-23 06:42:36
20150824		2015-08-24 18:01:56
20150825		2015-08-25 15:56:06
20150826		2015-08-26 18:50:44
20150827		2015-08-27 16:35:46
20150828		2015-08-28 05:59:46
20150829		2015-08-29 06:46:02
20150830		2015-08-30 06:19:44
20150831		2015-08-31 01:39:14
rec		2015-09-09 06:47:19

Total 12 Items.

⑤ choose the video or picture you want to download or playback



Tips:the video will recorded as motion detection, it's the video is section by section

For more functions of the camera you can find on the FAQs©

IPCC Technology CO.,Ltd.

Address: Building E, Dahong Science&Technology Park,
1st Industrial Area, Baihua Road, Guangming District, Shenzhen, P.R. China

Tel: 86-755-23416862 -666(Ext.)

Fax: 86-755-23416862

Mobile phone:86-13480787575

Email: support@ipccam.com

Skype: [ipccam](https://www.skype.com/en/contacts/ipccam)

Website: www.ipccam.com