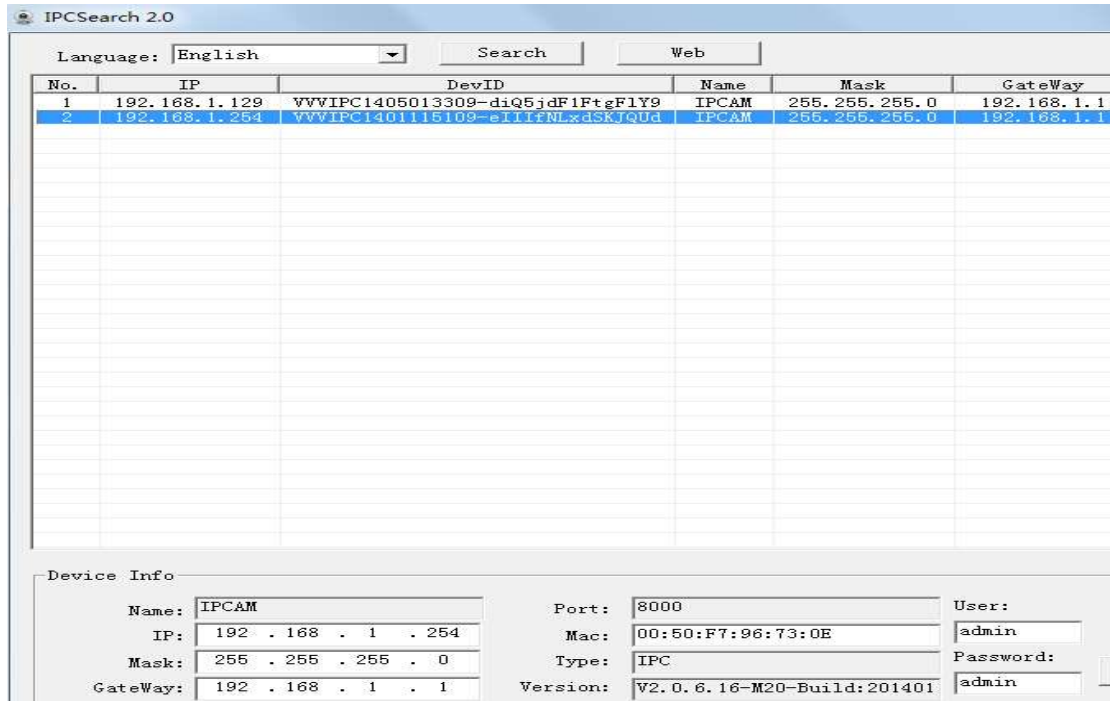
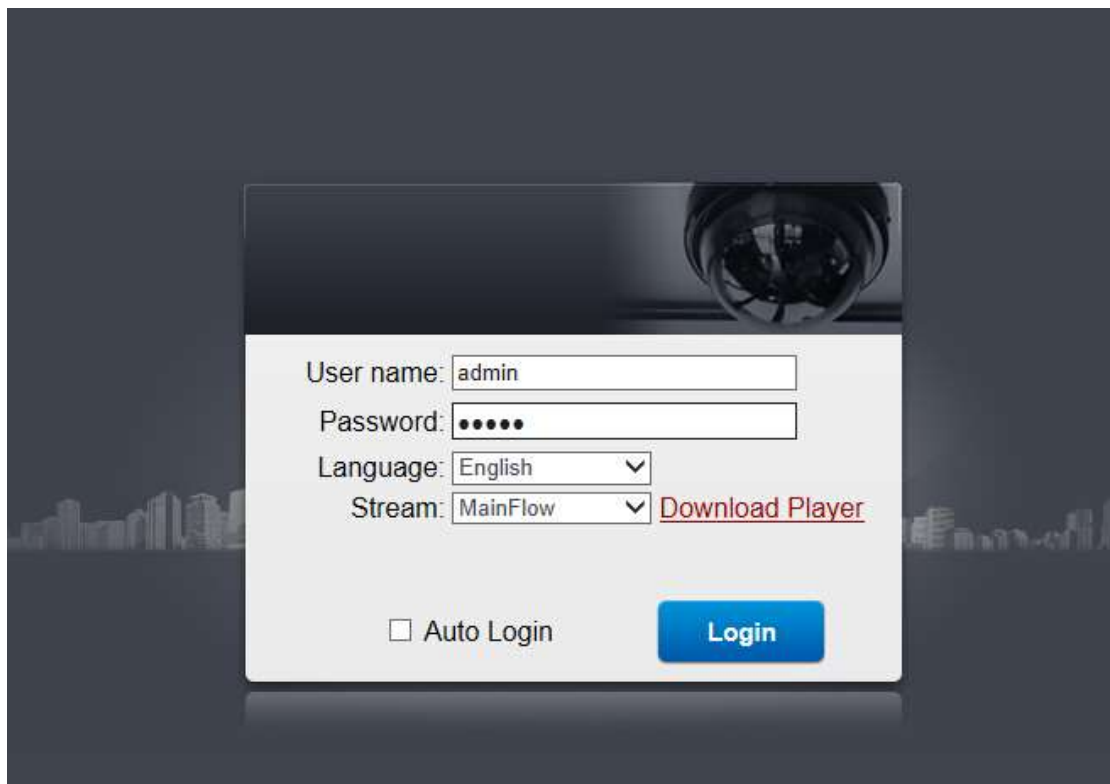


How to reset the camera or back to factory setting:

1. run "search tool", find the ip camera address, double click it and open it in the IE

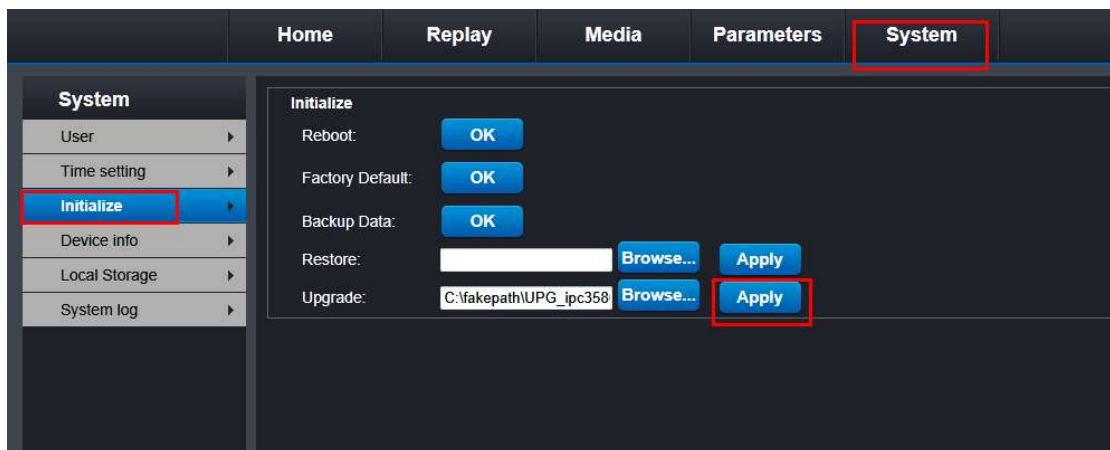
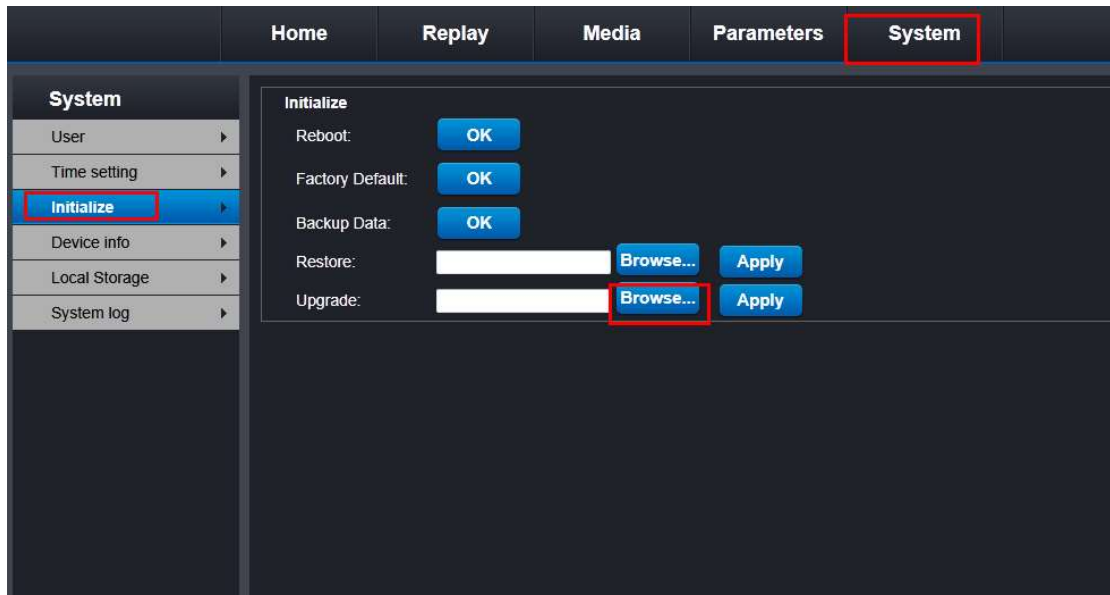


2. login the ip camera



3. click the “system” option, then choose the “Initialize” item.

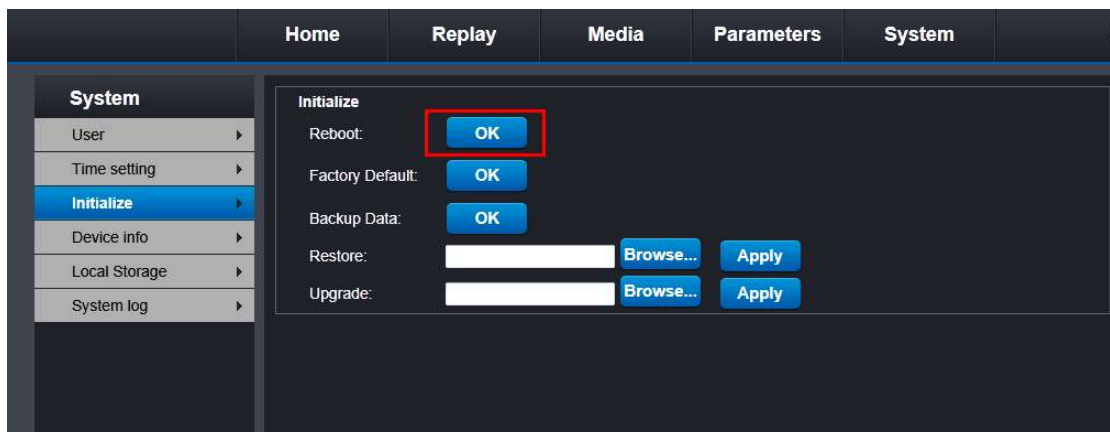
You can choose “Upgrade”, Browser the firmware, generally put the download firmware on the desktop



Or there is another way directly reset the ip camera:

<http://192.168.0.136/web/initializemain.html>

“http://ipaddress/web/initializemain.html”





www.ipccam.com www.ipcloudcamera.com support@ipccam.com

IPCC Technology CO.,Ltd.

Address: Building E, Dahong Science&Technology Park,
1st Industrial Area, Baihua Road, Guangming District, Shenzhen, P.R. China

Tel: 86-755-23416862 -666(Ext.)

Fax: 86-755-23416862

Mobile phone:86-13480787575

Email: support@ipccam.com

Skype: [ipccam](https://www.skype.com/people/ipccam)

Website: www.ipccam.com